

24 February, 2009



# Renault Explorer

Release – 1.5

## Brief description

### Purpose:

**Renault-Dacia Explorer** (next to document - “software”) allows you to add a blank key or card for many of **Renault** and **Dacia** cars **via OBD-2 socket**. **You DO NOT NEED any PIN code! Software programs keys/cards automatically**. Also, you can change VIN number in UCH module (immobilizer), for example, if your UCH module was previously used on another car.

### Options:

- Very simple and user-friendly software interface
- You do not need any PIN codes or access to Renault.net
- You can program up to 4 blank keys/cards
- Automatic remote control unit programming
- You can change VIN if immobilizer module was used previously
- VIN checksum check
- Internet updateable
- 10 minutes delay was removed
- **Some bugs were fixed**

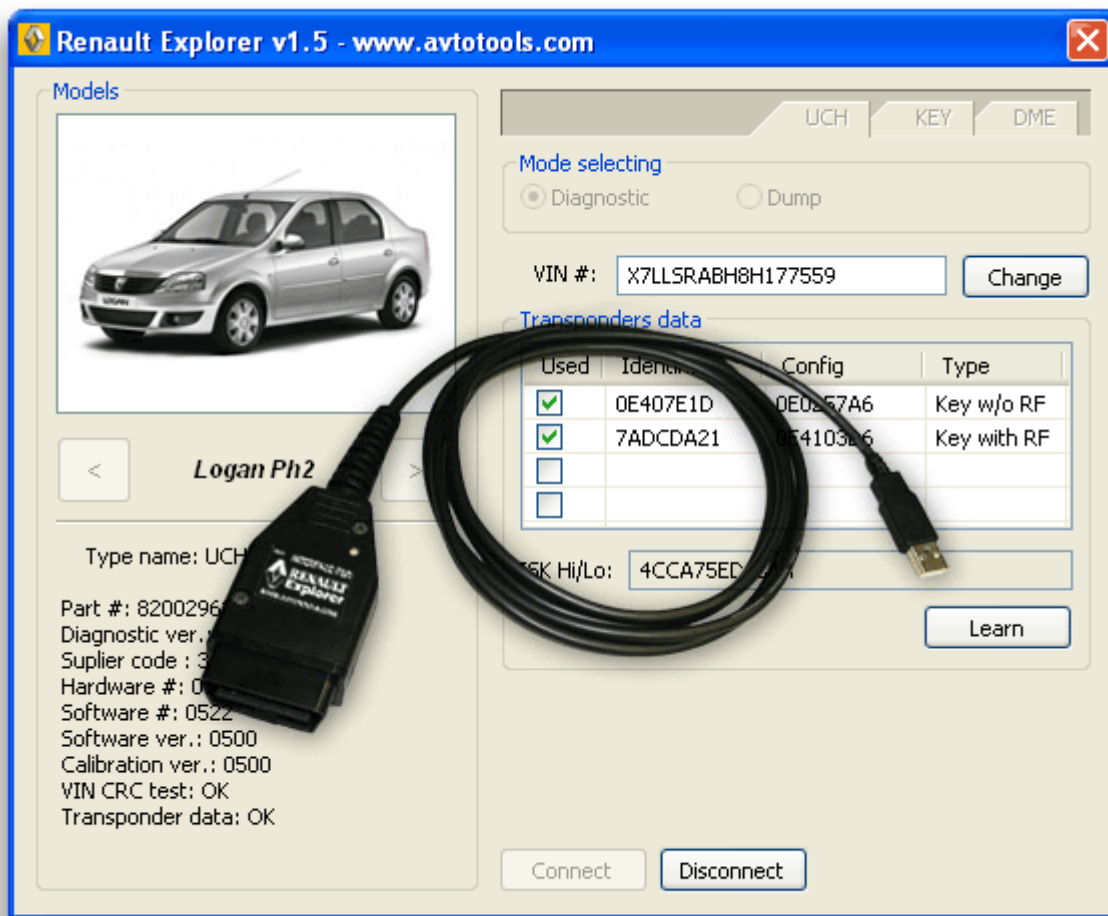
### Kit includes:

- Renault Explorer software
- User manual
- USB Interface

### Supported models (Renault and Dacia):

- Clio II Ph2/3, 2002-2006
- Espace IV, 2003-2006
- Espace IV Ph2, 2006+
- Kangoo MUX Ph2, 2002-2007
- Laguna II, 2000-2005
- Laguna II Ph2, 2005-2007
- **Logan, 2004-2008 - New!!!**
- **Logan Ph2, 2008+ - New!!!**
- Master Ph2, 2002-2006
- **Master Ph3, 2007+ - New!!!**
- Megane II, 2003-2006
- Megane II Ph2, 2007+
- **Sandero, 2008+ - New!!!**
- Scenic II, 2003+
- Scenic II Ph2, 2007+
- **Solenza, 2003-2005 - New!!!**
- Trafic II, 2002-2006
- **Trafic II Ph2, 2007+ - New!!!**
- **Twingo Ph2, 2002-2007 - New!!!**
- Velsatis, 2002+
- Velsatis Ph2, 2006+

How it looks:



## Driver installation

1. Start **RenExpInstall.exe** file
2. Select installation path. The default path is C:\Program Files\AvtoTools\RenExp
3. Please connect interface to USB
4. Install drivers from folder C:\Program Files\AvtoTools\RenExp\Drivers

## How to connect

1. **Switch ignition OFF**
2. Connect «**Renault Explorer**» interface to USB-port.  
(Install interface drivers, if needed. For help, refer to #Driver installation section)
3. Connect interface to OBD-II socket
4. Start «**Renault Explorer**» software
5. Select car model using < > buttons
6. After you press Connect, you will see the following information(see. picture):
  - Car ID data
  - VIN and checksum status
  - Keys or Cards information

## How to add a new key or card

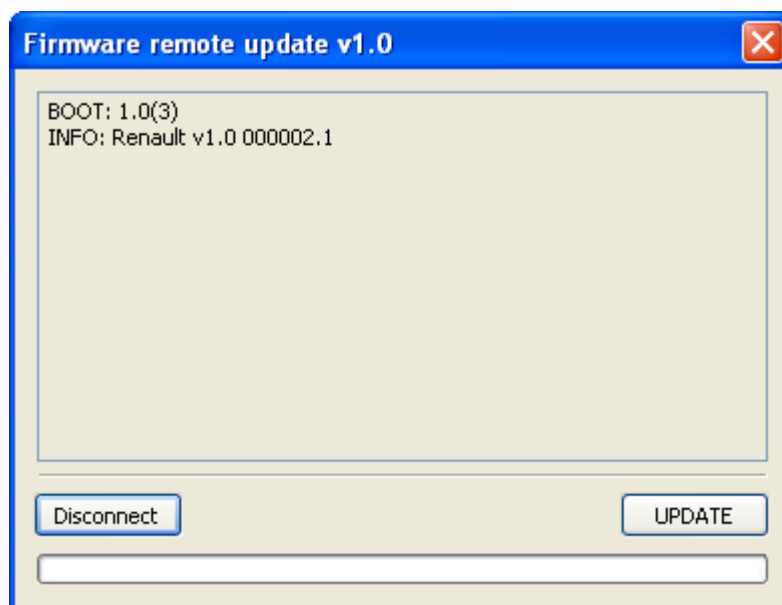
1. **Switch ignition OFF**
2. Establish connection with a car (*refer to # How to connect section*)
3. You can program up to 4 keys or cards per session
4. Click «**Learn**», and you will see - "**Please remove key/card before learning.**" message
5. Remove the key from ignition lock or cards from card rack, and click OK for continue.
6. After that, you get the following message: "**Please insert next key/card. Push 'OK' to learn or 'CANCEL' to end learning. Learning takes about 10 sec.**"
7. Insert card to a card rack or switch ignition ON with key and click OK to learn or CANCEL to cancel learn. (Key/card learning takes approx. 10 sec.)
8. After 10 sec. key or card is learned. And you are back on step 7
9. When programming of four keys/cards is complete or you press CANCEL you will get message - "**To store result please select 'OK', to discard click 'NO'. Storing results takes about 30 sec.**". Just follow the instructions.

## How to change a VIN

1. **Switch ignition OFF**
2. Establish connection with a car (*refer to # How to connect section*)
3. Enter a new VIN you need
4. Click – “Change” button, the software recalculates VIN checksum automatically and would make all necessary alternations.

## Adapter firmware update

1. Connect «**Renault Explorer**» interface to USB-port.  
(*Install interface drivers, if needed. For help, refer to #Driver installation section*)
2. **You do not need connect adapter to the car.**
3. Start firmware update program – «boot\_cli.exe»
4. Click «Connect» button
5. The program would read and display current firmware version
6. Click the Update button and select file with firmware update
7. After the update have been finished (it takes about 10 seconds) the message of successful update will appear
8. Click «Disconnect»



Q: I have followed the manual, but I cannot program keycard on Megan 2, 2006 m.y.

A: Probably, your card is not blank, check it, if it is possible, using **T-Base Hi-Tag2** programmer, you should get a factory default data

Q: I connected to the car, but VIN «lights» RED

A: VIN checksum is incorrect. Click «Change» to correct and save checksum

Q: Where can I get blank keys and cards?

A: You can get them form dealer or go to <http://shop.advanced-keys.co.uk/>